

**Josef Albers: Grey Steps, Grey Scales, Grey Ladders**  
**537 West 20th Street**  
**November 3 - December 17, 2016**

Hallway



**Josef Albers**

*Two color studies (Homage to the Square)*, n.d.

Oil, ink, colored pencil, and graphite on card stock with varnish

10 1/8 x 7 1/8 inches

25.7 x 18.1 cm

Framed: 19 x 15 5/8 x 1 1/2 inches

48.3 x 39.7 x 3.8 cm

Inscribed recto

ALBJO0075



**Josef Albers**

*Blick aus meinem Fenster Stadtlohn 1911 Juli (View from my window Stadtlohn 1911 July)*, 1911

Pen, ink, and gouache on paper

11 3/8 x 8 inches

28.9 x 20.3 cm

Framed: 19 3/4 x 16 5/8 x 7/8 inches

50.2 x 42.2 x 2.2 cm

Signed, titled, and dated recto

The Josef and Anni Albers Foundation

ALBJO0097

West Gallery



**Josef Albers**

*Bavarian mountain scene III*, 1919

Ink and watercolor on paper

10 1/8 x 12 5/8 inches

25.7 x 32.1 cm

Framed: 18 1/8 x 20 3/8 x 1 1/2 inches

46 x 51.8 x 3.8 cm

ALBJO0098



**Josef Albers**

*Bavarian mountain scene IV*, 1919

Ink and watercolor on paper

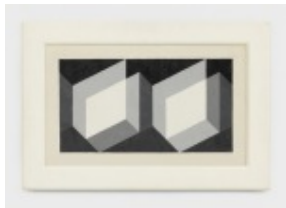
10 1/8 x 12 5/8 inches

25.7 x 32.1 cm

Framed: 18 1/8 x 20 3/8 x 1 1/2 inches

46 x 51.8 x 3.8 cm

ALBJO0099



**Josef Albers**

*Modified Repetition*, 1943

Oil on Masonite

15 1/2 x 25 1/2 inches

39.4 x 64.8 cm

Framed: 20 7/8 x 31 x 1 7/8 inches

53 x 78.7 x 4.8 cm

Initialed and dated lower right recto; signed, titled, dated,  
and inscribed verso

ALBJO0059



**Josef Albers**

*Homage to the Square*, 1962

Oil on Masonite

24 x 24 inches

61 x 61 cm

Framed: 24 1/2 x 24 1/2 x 1 3/8 inches

62.2 x 62.2 x 3.5 cm

Initialed and dated lower right recto; inscribed verso

ALBJO0049



**Josef Albers**

*Study for Homage to the Square*, 1965

Oil on Masonite

24 x 24 inches

61 x 61 cm

Framed: 24 1/2 x 24 1/2 x 1 3/8 inches

62.2 x 62.2 x 3.5 cm

Initialed and dated lower right recto; titled, dated, and  
inscribed verso

ALBJO0048



**Josef Albers**

*Homage to the Square [Entrez]*, 1964

Oil on Masonite

18 x 18 inches

45.7 x 45.7 cm

Framed: 18 3/4 x 18 3/4 x 1 1/4 inches

47.6 x 47.6 x 3.2 cm

Initialed and dated lower right recto; inscribed verso

The Josef and Anni Albers Foundation

ALBJO0043



**Josef Albers**

*Homage to the Square [In Ivory Mist]*, 1964

Oil on Masonite

18 x 18 inches

45.7 x 45.7 cm

Framed: 18 5/8 x 18 3/4 x 1 1/4 inches

47.3 x 47.6 x 3.2 cm

Initialed and dated lower right recto; inscribed verso

The Josef and Anni Albers Foundation

ALBJO0044



**Josef Albers**

*Homage to the Square*, 1959

Oil on Masonite

18 x 18 inches

45.7 x 45.7 cm

Framed: 18 1/8 x 18 1/8 x 1 1/8 inches

46 x 46 x 2.9 cm

Initialed and dated lower right recto

ALBJO0045



**Josef Albers**

*Color study for Mitered Square III (Homage to the Square)*,

n.d.

Oil and graphite on blotting paper

13 1/8 x 12 1/8 inches

33.3 x 30.8 cm

Framed: 23 1/8 x 17 x 1 5/8 inches

58.7 x 43.2 x 4.1 cm

Inscribed recto

ALBJO0061



**Josef Albers**

*Homage to the Square [Ephemeral]*, 1966

Oil on Masonite

48 x 48 inches

121.9 x 121.9 cm

Framed: 48 1/4 x 48 1/4 x 1 3/8 inches

122.6 x 122.6 x 3.5 cm

Initialed and dated lower right recto

The Josef and Anni Albers Foundation

ALBJO0054



**Josef Albers**

*Color study*, n.d.

Gouache and graphite on paper

5 x 11 1/8 inches

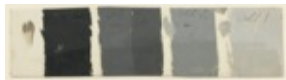
12.7 x 28.3 cm

Framed: 12 x 18 1/4 x 1 1/2 inches

30.5 x 46.4 x 3.8 cm

Inscribed recto

ALBJO0094



**Josef Albers**

*Color study*, n.d.

Oil and graphite on card stock

2 7/8 x 10 7/8 inches

7.3 x 27.6 cm

Framed: 10 x 18 x 1 1/2 inches

25.4 x 45.7 x 3.8 cm

Inscribed recto

ALBJO0079



**Josef Albers**

*Color study (Homage to the Square)*, n.d.

Gouache and graphite on paper

12 1/8 x 8 3/4 inches

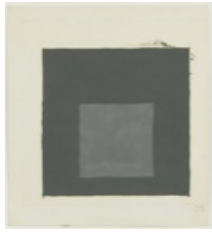
30.8 x 22.2 cm

Framed: 16 1/8 x 12 7/8 x 1 1/2 inches

41 x 32.7 x 3.8 cm

Inscribed recto

ALBJO0082



**Josef Albers**

*Color study (Homage to the Square)*, n.d.

Oil and graphite on blotting paper

13 1/8 x 12 1/8 inches

33.3 x 30.8 cm

Framed: 19 7/8 x 18 1/2 x 1 1/2 inches

50.5 x 47 x 3.8 cm

Inscribed recto

ALBJO0090



**Josef Albers**

*Color study (Homage to the Square)*, n.d.

Oil and graphite on blotting paper

13 1/4 x 12 inches

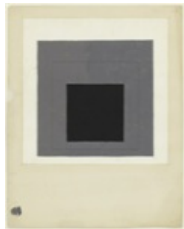
33.7 x 30.5 cm

Framed: 19 7/8 x 18 1/2 x 1 1/2 inches

50.5 x 47 x 3.8 cm

Inscribed recto

ALBJO0091



**Josef Albers**

*Color study for Homage to the Square*, n.d.

Oil and graphite on blotting paper

24 x 19 inches

61 x 48.3 cm

Framed: 33 1/8 x 27 5/8 x 1 1/2 inches

84.1 x 70.2 x 3.8 cm

Inscribed recto

ALBJO0065

South Gallery



**Josef Albers**

*Study for Equal and Unequal*, 1939

Oil on Masonite

11 x 26 inches

27.9 x 66 cm

Framed: 12 5/8 x 27 1/4 x 1 7/8 inches

32.1 x 69.2 x 4.8 cm

The Josef and Anni Albers Foundation

ALBJO0057



**Josef Albers**

*Indicating Solids*, 1971

Oil on Masonite

22 x 24 inches

55.9 x 61 cm

Framed: 22 5/8 x 24 5/8 x 2 inches

57.5 x 62.5 x 5.1 cm

Initialed and dated lower right recto; signed, titled, dated,  
and inscribed verso

ALBJO0056



**Josef Albers**

*Treble Clef*, c. 1932-1935

Gouache and graphite on paper

15 5/8 x 11 1/2 inches

39.7 x 29.2 cm

Framed: 22 7/8 x 16 1/2 x 1 1/2 inches

58.1 x 41.9 x 3.8 cm

ALBJO0197



**Josef Albers**

*Treble Clef G b*, 1932-1935

Gouache and graphite on paper

15 x 10 3/8 inches

38.1 x 26.4 cm

Framed: 22 7/8 x 16 1/2 x 1 1/2 inches

58.1 x 41.9 x 3.8 cm

Initialed and dated lower right recto

ALBJO0195



**Josef Albers**

*Treble Clef G c*, 1932-1935

Gouache and graphite on paper

14 7/8 x 11 inches

37.8 x 27.9 cm

Framed: 22 7/8 x 16 1/2 x 1 1/2 inches

58.1 x 41.9 x 3.8 cm

Initialed and dated lower right recto

ALBJO0196



**Josef Albers**

*Treble Clef G i*, 1932-1935

Gouache and graphite on paper

14 7/8 x 10 1/2 inches

37.8 x 26.7 cm

Framed: 22 7/8 x 16 1/2 x 1 1/2 inches

58.1 x 41.9 x 3.8 cm

Initialed and dated lower right recto

ALBJO0200



**Josef Albers**

*Treble Clef G n*, 1932-1935

Gouache and graphite on paper

15 x 10 1/8 inches

38.1 x 25.7 cm

Framed: 22 7/8 x 16 1/2 x 1 1/2 inches

58.1 x 41.9 x 3.8 cm

Initialed and dated lower right recto

ALBJO0198



**Josef Albers**

*Treble Clef G g*, 1932-1935

Gouache and graphite on paper

14 7/8 x 10 1/8 inches

37.8 x 25.7 cm

Framed: 22 7/8 x 16 1/2 x 1 1/2 inches

58.1 x 41.9 x 3.8 cm

Initialed and dated lower right recto

ALBJO0199

North Gallery



**Josef Albers**

*Color study for Homage to the Square*, n.d.

Oil and graphite on blotting paper with varnish

13 1/8 x 7 1/8 inches

33.3 x 18.1 cm

Framed: 17 x 15 1/4 x 1 1/2 inches

43.2 x 38.7 x 3.8 cm

Inscribed recto

ALBJO0062



**Josef Albers**

*Color study (Homage to the Square)*, n.d.

Gouache and graphite on paper

13 1/8 x 12 inches

33.3 x 30.5 cm

Framed: 17 3/8 x 16 x 1 1/2 inches

44.1 x 40.6 x 3.8 cm

Inscribed recto

ALBJO0093



**Josef Albers**

*Color study of grays*, n.d.

Oil on card stock with varnish

7 1/8 x 10 1/8 inches

18.1 x 25.7 cm

Framed: 14 5/8 x 17 1/8 x 1 5/8 inches

37.1 x 43.5 x 4.1 cm

ALBJO0063



**Josef Albers**

*Color study*, n.d.

Oil and graphite on card stock

4 7/8 x 11 inches

12.4 x 27.9 cm

Framed: 12 x 18 x 1 1/2 inches

30.5 x 45.7 x 3.8 cm

Inscribed recto

ALBJO0081



**Josef Albers**

*Study for Homage to the Square*, 1968

Oil on Masonite

24 x 24 inches

61 x 61 cm

Framed: 24 3/8 x 24 3/8 x 1 1/4 inches

61.9 x 61.9 x 3.2 cm

Initialed and dated lower right recto; titled and inscribed verso

The Josef and Anni Albers Foundation

ALBJO0050





**Josef Albers**

*Study for Homage to the Square*, 1968

Oil on Masonite

24 x 24 inches

61 x 61 cm

Framed: 24 3/8 x 24 3/8 x 1 1/4 inches

61.9 x 61.9 x 3.2 cm

Initialed and dated lower right recto; titled and inscribed verso

The Josef and Anni Albers Foundation

ALBJO0047



**Josef Albers**

*Study for Homage to the Square: Far in Far*, 1965

Oil on Masonite

24 x 24 inches

61 x 61 cm

Framed: 24 3/8 x 24 3/8 x 1 1/4 inches

61.9 x 61.9 x 3.2 cm

Initialed and dated lower right recto; signed, titled, dated, and inscribed verso

The Josef and Anni Albers Foundation

ALBJO0046



**Josef Albers**

*Study for Homage to the Square: Dimly Reflected*, 1963

Oil on Masonite

24 x 24 inches

61 x 61 cm

Framed: 24 3/8 x 24 3/8 x 1 1/4 inches

61.9 x 61.9 x 3.2 cm

Initialed and dated lower right recto; titled, dated, and inscribed verso

The Josef and Anni Albers Foundation

ALBJO0053



**Josef Albers**

*Study for Homage to the Square: Lone Whites*, 1963

Oil on Masonite

24 x 24 inches

61 x 61 cm

Framed: 24 3/8 x 24 3/8 x 1 1/4 inches

61.9 x 61.9 x 3.2 cm

Initialed and dated lower right recto; signed, titled, dated,  
and inscribed verso

The Josef and Anni Albers Foundation

ALBJO0052



**Josef Albers**

*Homage to the Square (A)*, 1950

Oil on Masonite

30 1/2 x 30 1/2 inches

77.5 x 77.5 cm

Framed: 31 1/8 x 31 1/8 x 1 1/8 inches

79.1 x 79.1 x 2.9 cm

Initialed and dated lower right recto; signed, titled, and  
dated verso

Private Collection

ALBJO0029



**Josef Albers**

*Color study for Homage to the Square*, c. 1950

Oil and graphite on blotting paper

24 x 19 inches

61 x 48.3 cm

Window: 16 3/4 x 17 1/4 inches

42.5 x 43.8 cm

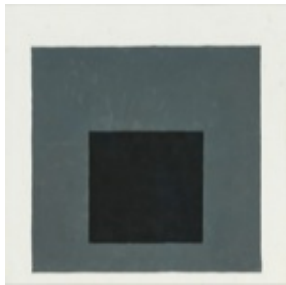
Framed: 27 1/2 x 25 1/8 x 1 5/8 inches

69.9 x 63.8 x 4.1 cm

Inscribed recto

The Josef and Anni Albers Foundation

ALBJO0066



**Josef Albers**

*Color study for Homage to the Square*, n.d.

Oil on blotting paper

24 x 19 inches

61 x 48.3 cm

Window: 15 3/4 x 15 3/4 inches

40 x 40 cm

Framed: 27 5/8 x 25 1/8 x 1 5/8 inches

70.2 x 63.8 x 4.1 cm

The Josef and Anni Albers Foundation

ALBJO0064



**Josef Albers**

*Study for Homage to the Square: Late Exchange*, 1964

Oil on Masonite

24 x 24 inches

61 x 61 cm

Framed: 24 1/2 x 24 1/2 x 1 3/8 inches

62.2 x 62.2 x 3.5 cm

Initialed and dated lower right recto; signed, titled, dated,  
and inscribed verso

The Josef and Anni Albers Foundation

ALBJO0051